



## A Message From Ms Louisa

Dear School Community,

What a wonderful start to Term 2! January was filled with creativity, curiosity, and plenty of outdoor play in the winter wonderland around us. Our classrooms have been buzzing with hands-on projects, music-making, and laughter as we dive into new learning adventures. It's been heartwarming to see students supporting each other, tackling challenges, and embracing all that this new term has to offer. Many thanks to the teachers for their fantastic efforts in making the Winter Carnival

As we step into February, we're excited for more shared moments, special events, and, of course, more fun! We will launch into our Alpine Ski and Snowboarding Flex Fridays, KIS's very own Winter Olympics and all of our everyday connections that keep this place humming.

Registration opens this month with our new online system. The admin team has been working hard to make this system user ready and easeful. Look ahead for all the information and links on February 10th. We are also hosting our Open House on Thursday, Feb 27th at 5:30pm. Join us for the evening and invite others curious about KIS. Thank you for being part of our KIS family—we love learning and growing together!

Ms. Louisa

---

### **ABSENCE AND LATE - SAFETY!**

Please notify the office if your child is going to be absent or late. You can call the school, or email the main office ([frontoffice@kis.ca](mailto:frontoffice@kis.ca)) this will ensure your child's safety.



## February Dates To Remember

<p><b>February 3-7</b></p>	<p><b>February 4 - School of Rock</b>  <b>February 6 – Sub Sandwich Day</b>  <b>February 7 - Flex Friday (Alpine Ski/Snowboard)</b></p>
<p><b>February 10-14</b></p>	<p><b>FEBRUARY 10 - PRO-D DAY (SCHOOL AGE)</b>  <b>February 12 - Fire Drill</b>  <b>February 12 - House Meet - Winter Olympics! 1-3PM</b>  <b>February 13 - Board Meeting 7PM</b>  <b>February 14 -Flex Friday (Alpine Ski/Snowboard)</b></p>
<p><b>February 17-21</b></p>	<p><b>February 17 -Family Day (no school)</b>  <b>February 18 - Non-instructional Day</b>  <b>February 20 - Earthquake Drill</b>  <b>February 21 - Flex Friday (Alpine Ski/Snowboard)</b>  <b>February 21 - PSG Movie Night (Vivo)</b></p>
<p><b>February 24-28</b></p>	<p><b>February 24 - Pink Shirt Day</b>  <b>February 27 - Spirit Day - 100 Days of School</b>  <b>February 27 - Open House (3PM)</b>  <b>February 28 - Flex Friday (Alpine Ski/Snowboard)</b></p>

## TUITION REMINDER:

**FEBRUARY TUITION REMINDER TUITION IS DUE ON FEBRUARY 1ST**

FIND OUT MORE



# 2025 - 2026 K - GRADE 7 REGISTRATION OPEN SOON!



## GROW WITH US!

**ENROLL TODAY AND WATCH  
YOUR CHILD THRIVE**



**SMALL CLASS  
SIZES**



**FRENCH  
PROGRAM**



**DEDICATED  
TEACHERS & EA'S**



**BEFORE AND  
AFTERCARE**



**FULL DAY  
KINDERGARTEN**



**EXTRACURRICULAR  
PROGRAMS:  
SWIMMING, NORDIC &  
ALPINE SKIING,  
CLIMBING,  
PERFORMING ARTS,**



**NO EARLY  
DISMISSALS**



"I have a great teacher, who teaches us lots of great things! I love math, and social studies. I also loved working on my invasive species project. I learned how to ski this year too!"

- JASPER GRADE 4



"I like it because I have lots of friends. I love to learn new things and I love my teacher. I like doing the cheer a lot!"

- MAYA GRADE 1

"I like it because everyone knows each other, and the teacher and staff are really nice. At my old school I would go into another class or the office and they would say 'who are you' or call you by the wrong name. That never happens at KIS.

I love how much we're outside here too!

The plays we have been working on at lunch have been really fun. I'm excited for our performance in the spring."

- TAYA GRADE 6

Secure your child's spot today and join our vibrant learning community at Kimberley Independent School. Register now! Give your child the gift of an exceptional education.

📞 250 427 1779

🌐 [www.kis.ca](http://www.kis.ca)

📍 73 101 Ave, Kimberley, BC

**REGISTRATION WILL BE CHANGING TO ONLINE THIS  
YEAR. THE LINK WILL COME OUT ON THE WEBSITE  
AND VIA EMAIL TO CURRENT FAMILIES**

# FEBRUARY HIGHLIGHTS

---

2025/26 REGISTRATION OPENS  
TO KIS FAMILIES- ONLINE  
MONDAY FEBRUARY 10

> [REGISTRATION](#)

PSG MOVIE NIGHT!!  
FRIDAY FEBRUARY 21  
SEE POSTER BELOW!



SPIRIT DAYS!!  
THURSDAY FEBRUARY 27  
100 DAYS OF SCHOOL



KIS OPEN HOUSE  
THURSDAY FEB 27 @ 5:30PM



**MAKE A DIFFERENCE AND BE PART OF OUR PARENT SUPPORT GROUP!**

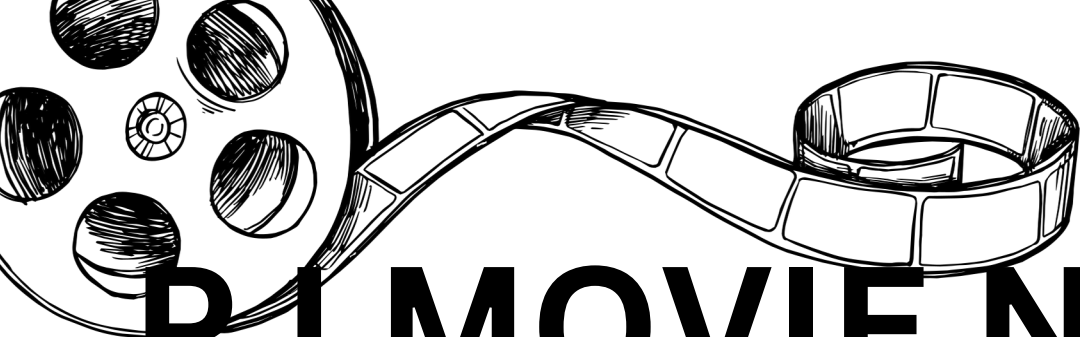
The parent support group is a vital part of the KIS community.

The PSG, not only helps with building community through the monthly events, but they are also a big part of the school's ability to apply for grants. Many grants that can be available to us will help us to build and grow what is available to the students.

Being on the PSG membership will cover your full year of volunteer hours provided you contribute to the meetings and events.

Please let the front office know if you are interested.

**UPCOMING PSG COMMUNITY EVENTS:**



# PJ MOVIE NIGHT

**FRIDAY FEBRUARY 21ST 2025**

**6PM-8PM**

**HOSTED BY PSG @**

**KIMBERLEY INDEPENDENT SCHOOL**

**\$5 ENTRY PER STUDENT**

**\$10 PER FAMILY**



*\*Bring empty drinking bottle to purchase a drink fill\**

*\$2 popcorn bag  
\$1 baked goods  
\$1 drink fill*



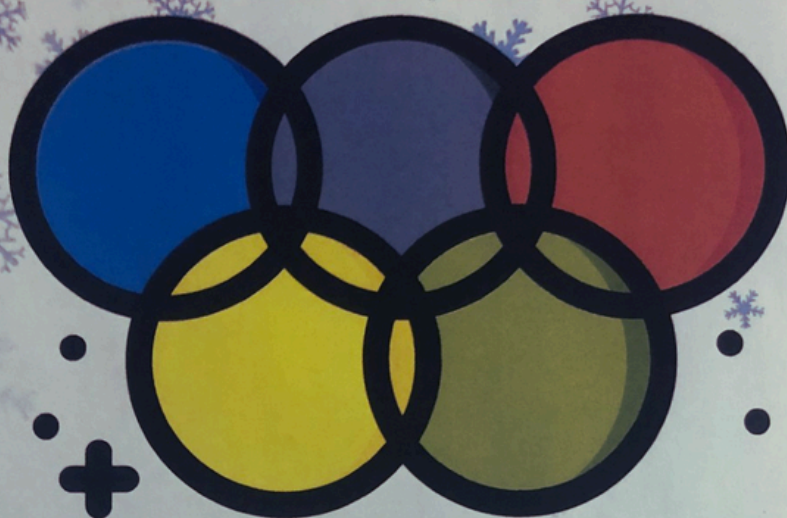
**VOLUNTEERS PLEASE RSVP LISA @250-464-9882**

**(HOURS WILL GO TOWARDS KIS VOLUNTEER HRS)**

WE STILL NEED VOLUNTEERS FOR THE WINTER  
OLYMPICS HAPPENING ON FEBRUARY 12TH!  
CONTACT THE OFFICE TO LET US KNOW IF YOU CAN  
COME PLAY!

FRONTOFFICE@KIS.CA

**House meet**



**KIS**

# Winter Olympics

**Wednesday February 12th**


**1-3pm**

**Meet in the KIS gym**



- \*Snowball toss
- \*Obstacle course
- \*Snowman building
- \*Skee-ball
- \*Make your own medals!
- \*Hot chocolate warm up!

# K.I.S. ILLNESS POLICY

<b>I NEED TO STAY HOME IF.....</b>						
I have a fever	I am vomiting	I have diarrhea	I have a rash	I have head lice	I have an eye infection	I have been in a hospital
						
Temperature of 100 or higher	Whithin the past 24 hours	Whithin the past 24 hours	Body Rash with itching or fever	Itchy head, active head lice	Redness, itching, and/or "crusty" drainage	Hospital stay and/or ER visit
<b>I AM READY TO GO BACK TO K.I.S. WHEN I AM.....</b>						
Fever free for 24 hours without the use of fever reducing medication. ie Tylenol, Motrin.	Free from vomiting for at least 2 solid meals.	Free from diarrhea for at least 24 hours	Free from rash, itching, or fever for at least 24 hours.	Treated with appropriate lice treatment at home and no sign of lice.	All redness and itching and/or crusty drainage has been gone for 24 hours	Released by medical provider to return to school/ daycare

## Kimberley Independent School Sickness Policy

K.I.S. asks parents to please keep their child/children at home or seek alternative care arrangements for the following situations in which an illness is preventing a child from participating normal activities and/or is taking up more of the caregivers/teacher's time from the other children than the staff ratio will allow.

### Conditions for Exclusion:

- Pain – any complaints of unexplained or undiagnosed pain
- Fever (100 degrees F/38.3 degrees C or higher)
- Sore throat or trouble swallowing
- Severe itching of body and scalp
- Known or suspected communicable diseases
- Headache or stiff neck
- Yellow/green sinus discharge
- Diarrhea/Vomiting
- Scabies
- Head lice
- Shingles/Chicken Pox (open wounds)
- Hepatitis A
- Strep throat
- Impetigo
- Tuberculosis
- Measles
- Mumps
- Pink eye (with discharge)
- Ring worm
- Rubella (German measles)
- Whooping cough

### Conditions for Non-Exclusion:

- Shingles/Chickenpox (with no discharge or covered wounds)
- Colds without colored phlegm

It is required to keep (or take) a child home when the child:

- Is suffering from one or more of the above symptoms/conditions
- Is not well enough to take part in the activities at school.

Ultimately, the care of the child is parent's responsibility.

Parents will inform the school first thing in the morning if a child is staying home sick that day with a description of the ailments and/or within 24 hours of a diagnosis of a serious illness or contagious, communicable disease in the family. This is to protect staff and other families who attend the school.

### Care of a Sick Child and Notification of Parents

When a child becomes ill, we will make the child comfortable in a quiet place where he/she can rest and will be closely supervised.

Parents will be notified immediately and agree to begin making alternative work arrangements or arrangements for alternate care. If your child is seriously ill, you or an alternate must come for the child IMMEDIATELY. If we cannot reach a parent, we will call an emergency contact listed on the registration form or the child's doctor may be contacted, depending on the seriousness of the illness.